

Ice rink

~16,000 sq ft of town square, a significant portion. (about 200x80 ft)

December

January

February

In the winter, mostly December – February, it's an awesome outdoor ice rink.

According to my observations, the popularity swings somewhat but it does remain used.

Ice struggles at both ends of the season, but it normally can't open in November, and it struggles to remain open after February.

March

April

May

June

July

August

It mostly sits here all of these months. It really isn't usable for anything, because it's too slick, and too hot.

Both issues are significant by themselves. To really make it usable you'd need to address both of them. If the rink was just grass, it might be more bearable because grass is self-cooling to an extent. It takes water to accomplish that. And also, most of the Town Square is already grass, so I'm not arguing what we really need is more grass. Most of the grassy areas are not used that much. We have tried to make use of the area for summer community concerts, but it's really the trees that make that work, not the rink. The rink is a problem. The chiller building provides enough shade to make it work, but it's not at all ideal; the concrete is more in the way than anything else.

September (~1 week)

For two days, and the prep/cleanup days, it serves a purpose at Swiss days. In order to serve this purpose, it has to be cleaned and covered.

September (~3 weeks)

October

November

Again, it mostly sits here all of these months, in the way, and unusable.

Redo the rink?

Why?

Limited lifetime of the rink itself – it won't last forever.

Make the surface less slick, and solve one of the two key issues preventing more use.

I think it's a requirement, sooner or later. Sooner is better if we can fund it.

Cover the rink?

CONS

- * Less "outdoor feel"
- * Concern about stuff falling off the roof? (like every building)

PROS

- * Keep snow mostly off the ice, making rink maintenance simpler and cheaper and less obtrusive to operating schedule/skaters. IE open on time, keep it open with less concern for weather.
- * Improve the consistent ice quality (less soft spots)
- * Lower the cost of keeping the ice solid
- * Provide shade and shelter for a multitude of possible year-round uses, (listing ideas/possibilities)
 - * Sports such as pickleball, rollerblading, cornhole, etc, etc
 - * Events such as community concerts, community markets, or other get-togethers
 - * Swiss Days would not have to pay for and install/remove a cover every year for two days

Cover options

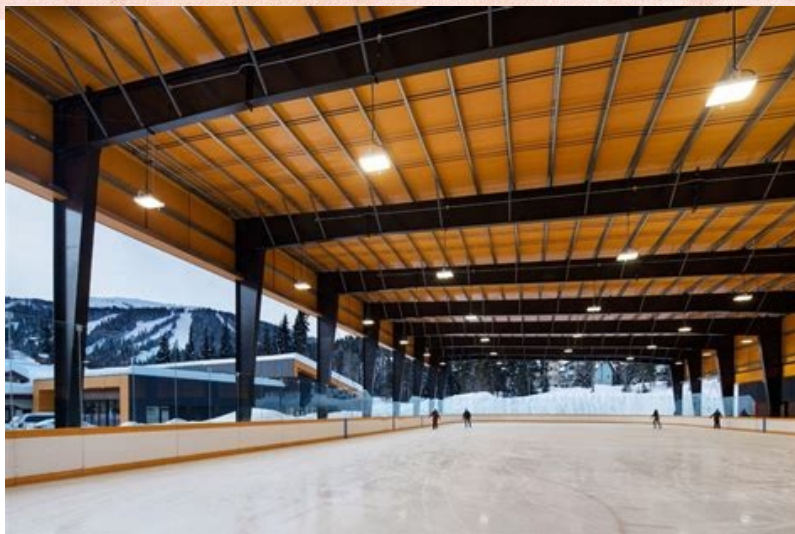
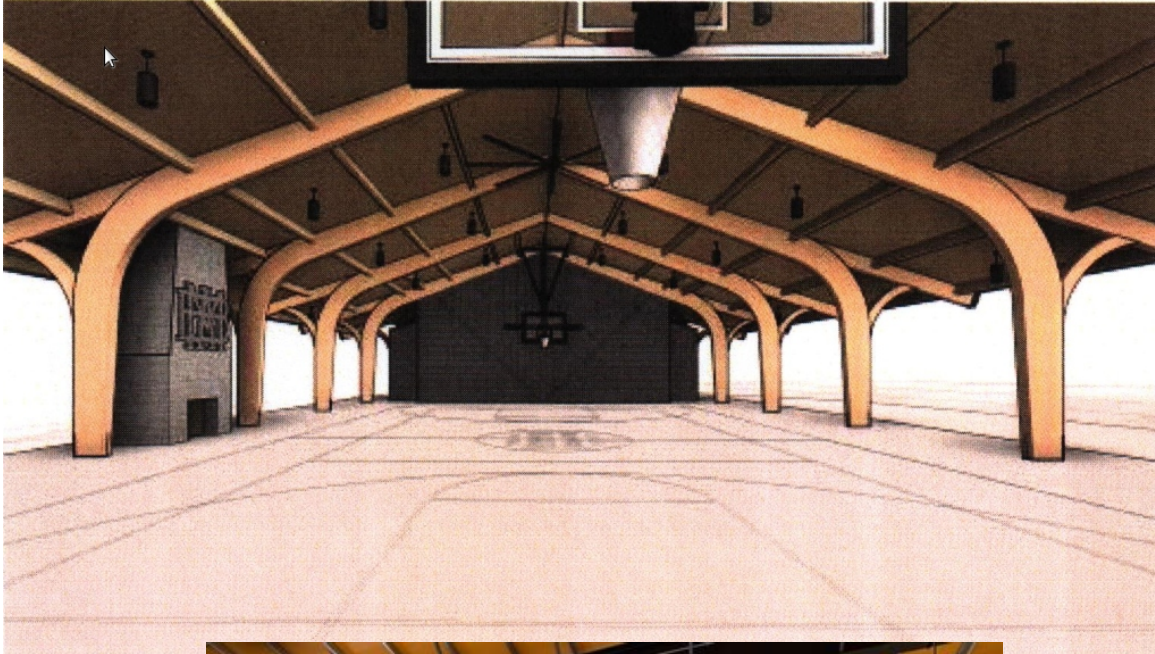
-- Solid (possibly retractable, possibly with skylights or other enhancements)
PROS / CONS

- Mesh (translucent)
PROS / CONS

- Soft Material (more opaque, IE "shade sail" type options)
PROS / CONS

Solid

I believe it could be “attractive”. Here are two examples of covers that are relatively inviting. I think we could do better than these. It would be worth saving up for. The third design I don’t like.



Mesh

Something like this is possible – I've been to this rink in Sun Valley Idaho. They keep it open year-round.



Material (reinforced fabric or something like that)

I think there are a lot of options in this category. We'd want to take time and create a great design, and again it might be saving up for. I think we might get away with a smart "partial" design that would block the evening sun in the west while keeping the rink more open.

