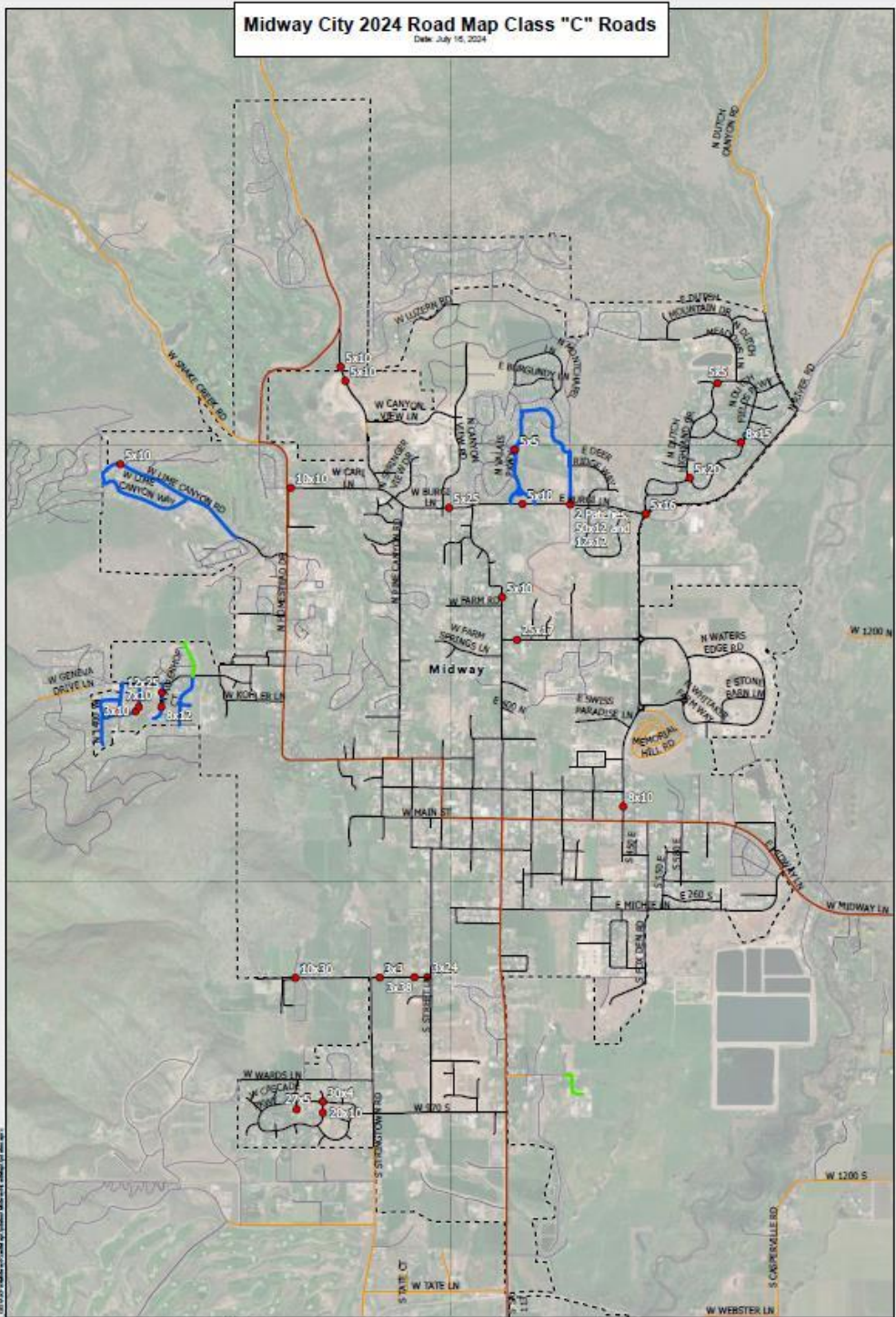


2024 ROAD SURFACE TREATMENTS / CONTRACT

CITY ENGINEER

Midway City 2024 Road Map Class "C" Roads

Date: July 15, 2024



1 INCH = 1,700 FEET

0 810 1,620 2,430 FEET

COORDINATE SYSTEM: NAD 1983
STATEPLANE UTAH CENTRAL FIPS 4002

PROJECT # 240141	DRAWN BY ROM	APPROVED BY BMC
---------------------	-----------------	--------------------

LEGEND

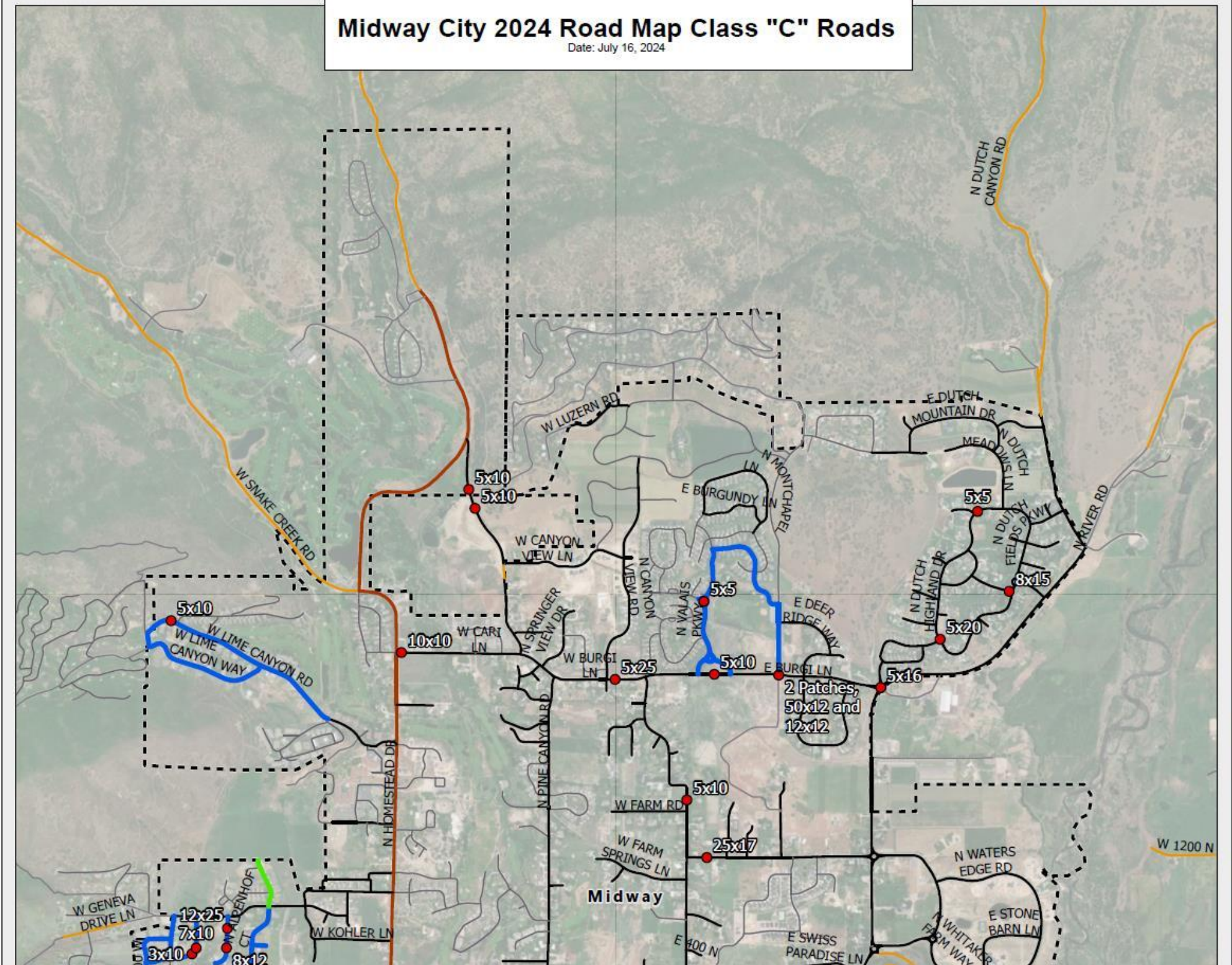
- Pot holes
- Midway City Roads
- Wasatch County Roads
- Private Roads
- LDCP
- Midway City Boundary
- Crack Sealing
- Slurry and Crack Sealing

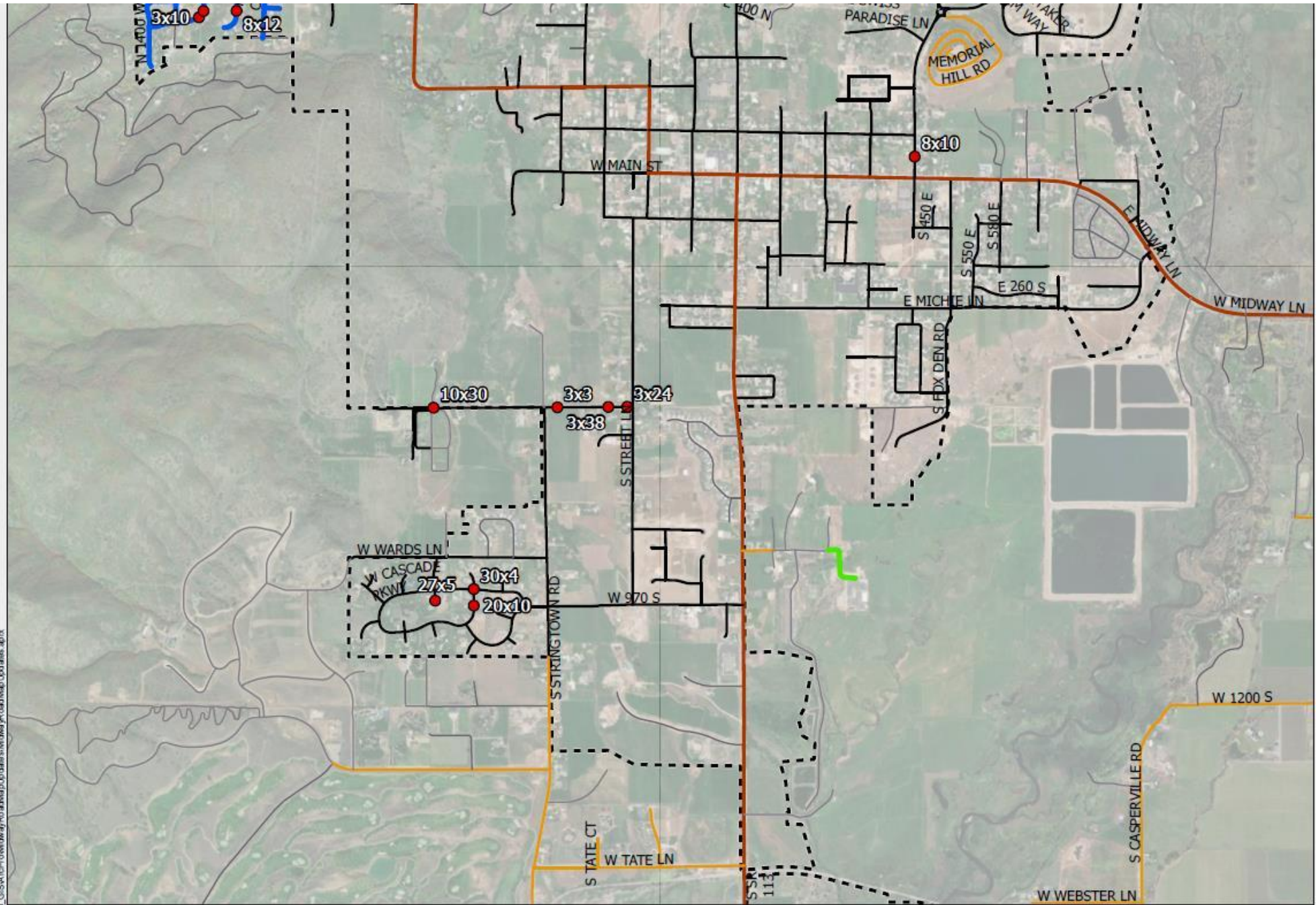
ARDURRA

802 280-8700
801 340-8700
801 340-8700
WWW.ARDURRA.COM

Midway City 2024 Road Map Class "C" Roads

Date: July 16, 2024





1 INCH = 1,700 FEET


0 810 1,620 2,430 FEET

COORDINATE SYSTEM: NAD 1983
STATEPLANE UTAH CENTRAL FIPS 4302

PROJECT # 240141	DRAWN BY NXM	APPROVED BY BWC
---------------------	-----------------	--------------------

LEGEND

- Potholes
- Crack Sealing
- Slurry and Crack Sealing
- Midway City Roads
- Wasatch County Roads
- Private Roads
- UDOT
- Midway City Boundary



ARDURRA

502 33RD STREET
CODY, WY 82414
PHONE: 307.587.3411 WWW.ARDURRA.COM

DOCUMENT PATH: K:\240141\CDD\5_GIS\Aerial\Midway\RoadMap\Updates.aprx