

HEBER CITY
POLICE DEPARTMENT

HEART OF THE WASATCH BACK



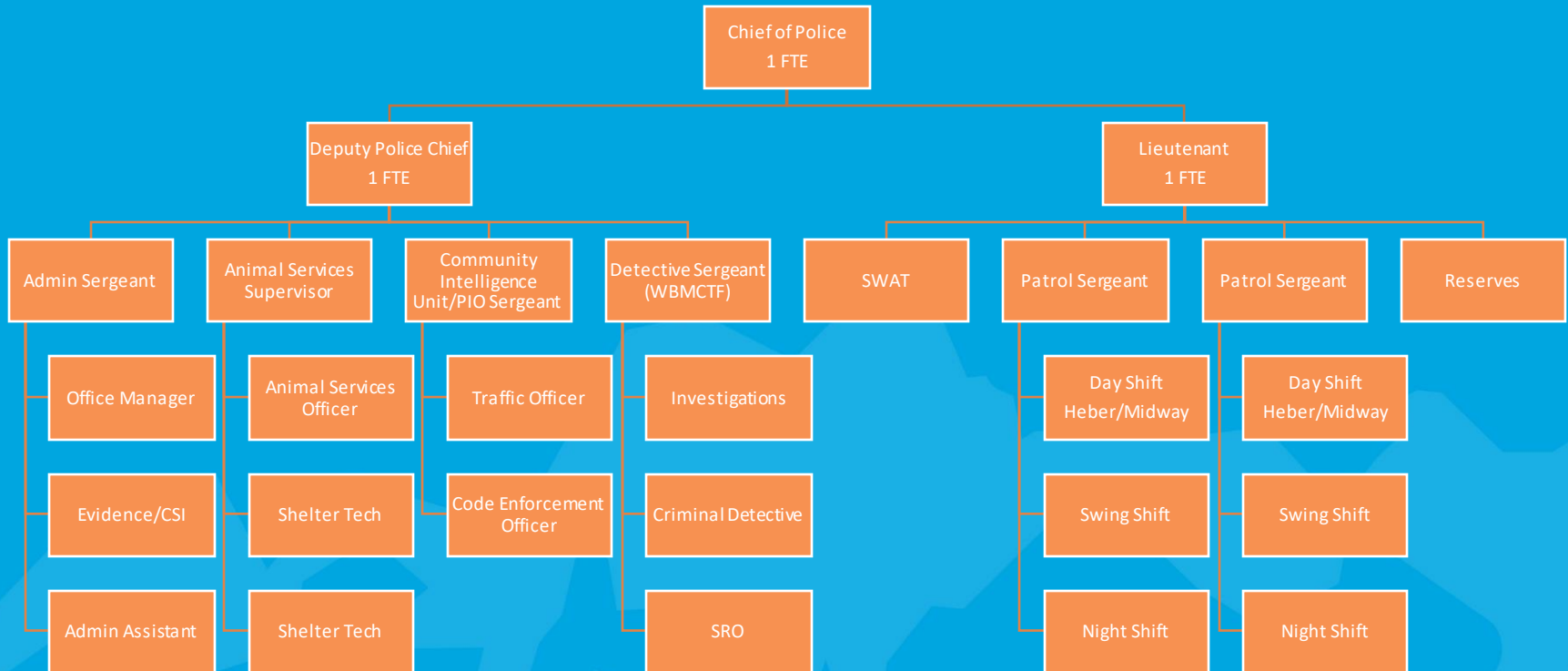
Midway

HEBER CITY \ MIDWAY POLICE DEPARTMENT

Heber City & Midway Service Partnership

03/11/2024

HEBER / MIDWAY ORGANIZATION



Expectations / Services Provided

- Work 12-hour shifts from 7am-7pm, Monday-Sunday.
 - Provide two officers.
 - Officers will be assigned to patrol only in Midway during those hours.
- Enforce Utah Code consistent with law enforcement training and direction of city expectations.
- Enforce Midway municipal code consistent with city expectations.
- Provide administrative oversight, training, backup, report approvals, records reporting, evidence handling, equipment management and other ongoing support.

Expectations / Services Provided

- Promote a positive image for Midway by providing professional customized services.
- Provide two clearly marked units identified as Midway Officers.
- Operate Midway as a beat using the same officers on a routine basis to promote community policing and interaction.
- Provides better transparency for entities involved.
 - Monthly attendance of council meetings
 - Daily briefing bulletins to Council.
 - Annual and other special reports as requested by the City.

GOALS

- Provide a high level of service to the administration and citizens of Midway.
- Embrace the community policing philosophy so Midway knows these are their officers and not transplants.
- For Midway to know they are receiving value for their expenditures.
- For Midway to want to further partner and expand services with Heber City Police Department in the future.

Costs

	YEAR 1		YEAR 2
Personnel - X2		Year 1	Personnel - X2
			Year 1
Officer's wages and benefits	\$278,206		Officer's wages and benefits
Training	\$4,000		\$278,206
Officer Overtime (billed actual)	\$12,000		Training
			\$4,000
			Officer Overtime (billed actual)
			\$12,000
Equipment – X2			Equipment – X2
Vehicle Lease			Vehicle Lease
\$32,000			\$32,000
One time vehicle upfit	\$20,000		Fuel (billed actual)
Fuel (billed actual)	\$8,000		\$8,000
Officer Equipment (1 Time Cost)	\$21,000		Officer Equipment
(Glock 45 Handgun) (Rifle .223)			\$500
(Radio) (Taser) (Body worn camera)			UNIFORMS
(DFIB)			\$1200
PLATE Carrier			Administration of Services:
UNIFORMS	\$1200		20% of Personnel Costs
Patches (one time)	\$200		\$58,841
Badges (one time)	\$500		Second Year Costs for One Officer
Computer Laptop	\$3,400		\$394,741
Administration of Services:			
20% of Personnel Costs	\$58,841		
First Tear Costs for One Officer	\$439,347		

Questions / Discussions

