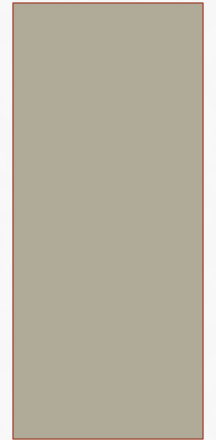
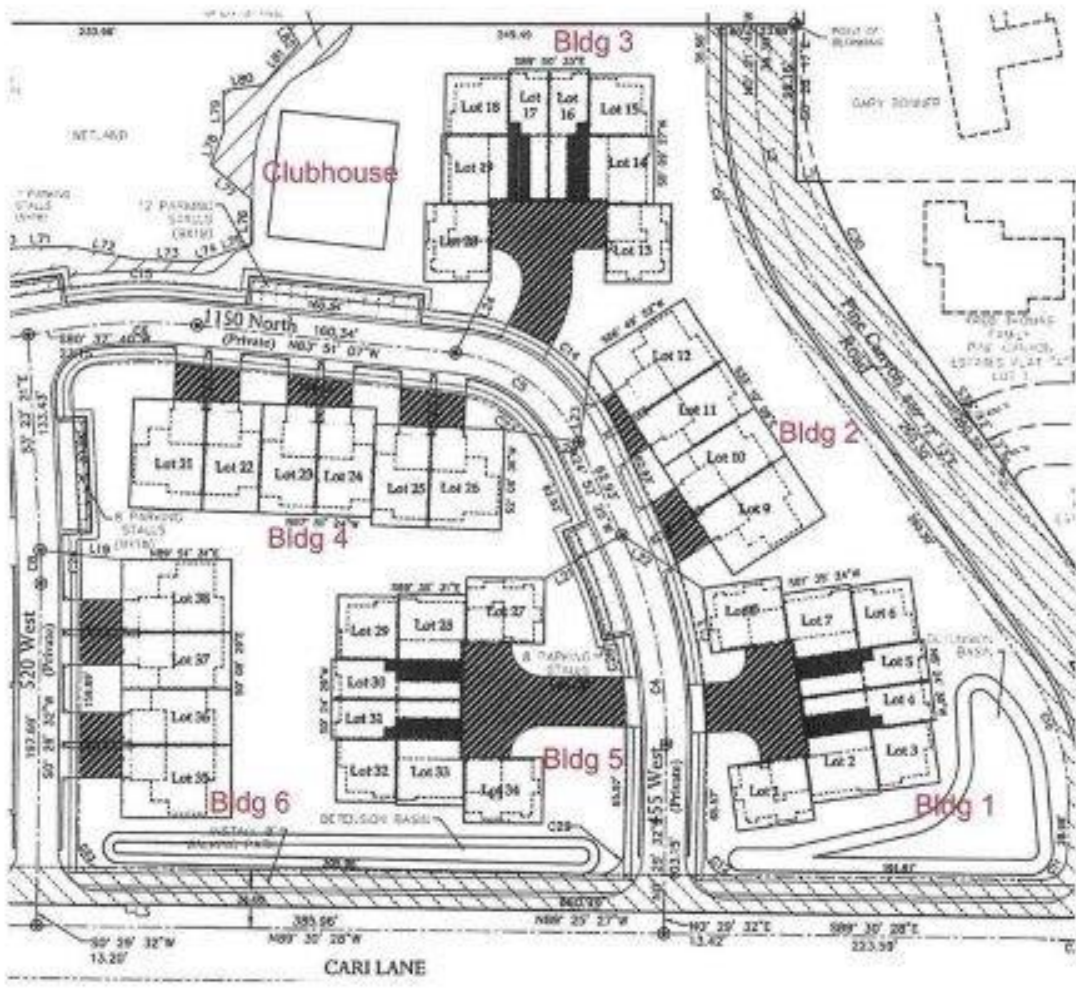


LODGES AT SNAKE CREEK CITY PLOW SNOW

BRIAN AZOUZ



1



- 1. 1116 N 455 W
- 2. 1140 N 455 W
- 3. 1144 N 455 W
- 4. 475 W 1150 N
- 5. 1115 N 455 W
- 6. 1120 N 520 W
- C. 480 W 1150 N

Lodges at Snake Creek – Original phase

2



ADDRESS TABLE	
UNIT	ADDRESS
30	1125 NORTH 500 WEST
40	1127 NORTH 500 WEST
41	1130 NORTH 500 WEST
42	1133 NORTH 500 WEST
43	1135 NORTH 500 WEST
44	1137 NORTH 500 WEST
45	1140 NORTH 500 WEST
46	1143 NORTH 500 WEST
47	504 WEST 1150 NORTH
48	502 WEST 1150 NORTH
49	540 WEST 1147 NORTH
50	540 WEST 1144 NORTH
51	545 WEST 1150 NORTH
52	548 WEST 1150 NORTH
53	550 WEST 1150 NORTH
54	558 WEST 1150 NORTH
55	562 WEST 1150 NORTH
56	564 WEST 1150 NORTH
57	566 WEST 1150 NORTH
58	568 WEST 1150 NORTH
59	572 WEST 1150 NORTH
60	574 WEST 1150 NORTH
61	576 WEST 1150 NORTH
62	578 WEST 1150 NORTH

ADDRESSING TO BE COMPLETED BY
WASATCH COUNTY GIS DEPARTMENT

Lodges at Snake Creek – Second phase

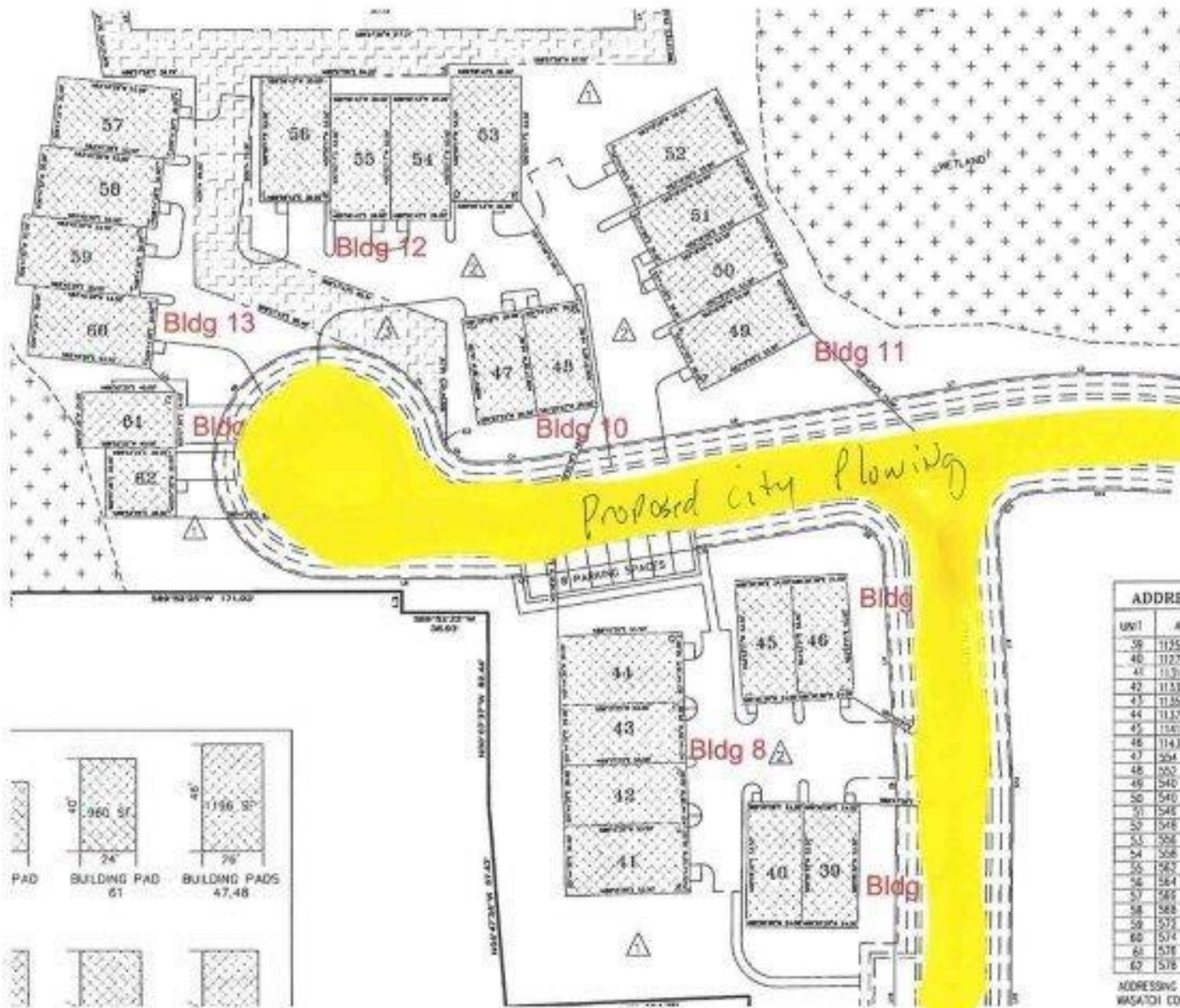
3



Proposed city
snow flow

- 1. 1116 N 455 W
- 2. 1140 N 455 W
- 3. 1144 N 455 W
- 4. 475 W 1150 N
- 5. 1115 N 455 W
- 6. 1120 N 520 W
- C. 480 W 1150 N

Lodges at Snake Creek – Original phase



4

Proposed
City
Snow plow

Proposed city plowing

ADDRESS TABLE	
UNIT	ADDRESS
39	1125 NORTH 500 WEST
40	1122 NORTH 500 WEST
41	1120 NORTH 500 WEST
42	1117 NORTH 500 WEST
43	1116 NORTH 500 WEST
44	1112 NORTH 500 WEST
45	1110 NORTH 500 WEST
46	1111 NORTH 500 WEST
47	564 WEST 1150 NORTH
48	563 WEST 1150 NORTH
49	540 WEST 1142 NORTH
50	540 WEST 1144 NORTH
51	540 WEST 1150 NORTH
52	548 WEST 1150 NORTH
53	568 WEST 1150 NORTH
54	568 WEST 1150 NORTH
55	567 WEST 1150 NORTH
56	564 WEST 1150 NORTH
57	565 WEST 1150 NORTH
58	568 WEST 1150 NORTH
59	574 WEST 1150 NORTH
60	574 WEST 1150 NORTH
61	578 WEST 1150 NORTH
62	578 WEST 1150 NORTH

ADDRESSING TO BE COMPLETED BY
WASATCH COUNTY GIS DEPARTMENT

Lodges at Snake Creek – Second phase





