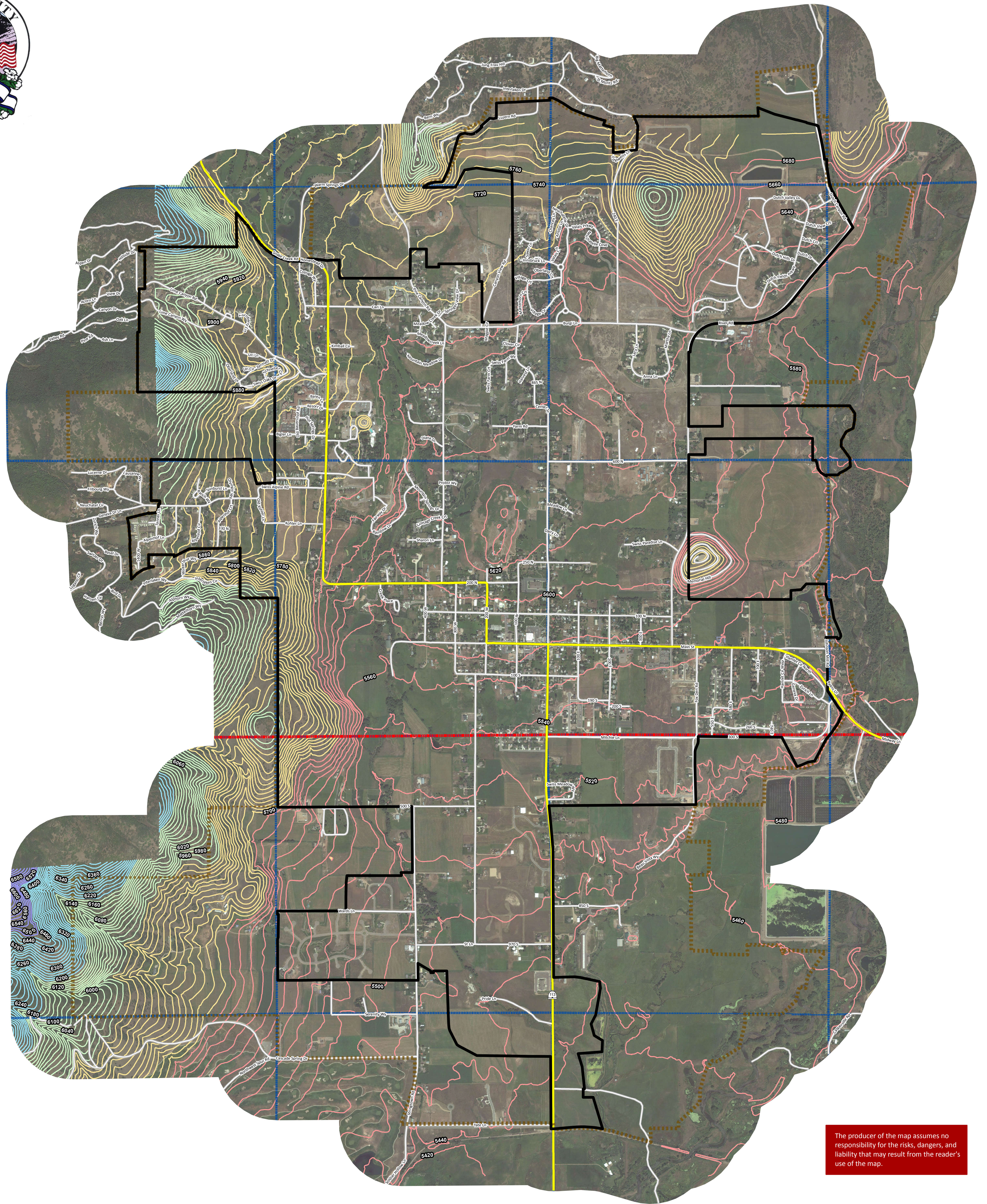


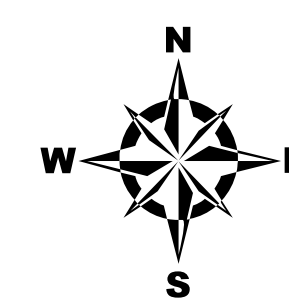
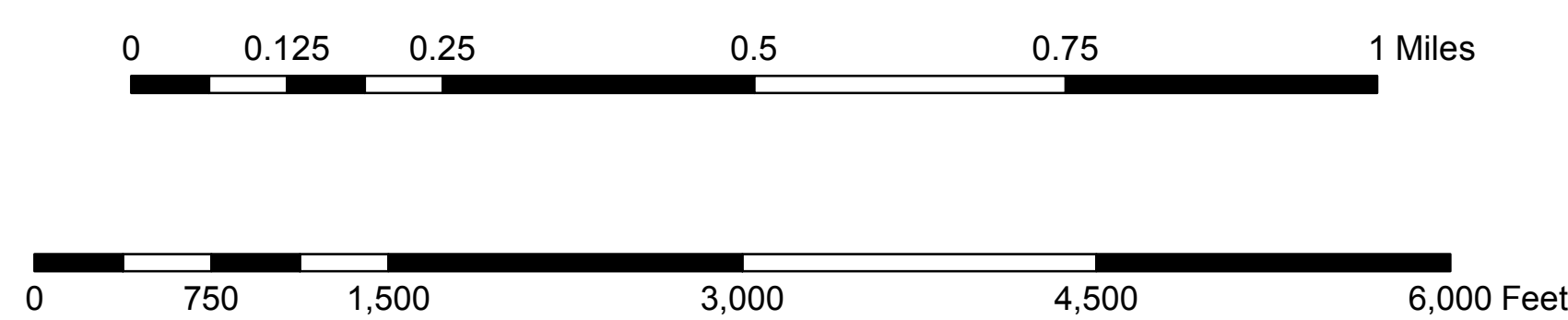
MIDWAY CITY - Aerial (2010) & Contours



The producer of the map assumes no responsibility for the risks, dangers, and liability that may result from the reader's use of the map.

Legend

- | | | |
|------------------|------------------------|---------------|
| Contours | Midway City | Township Line |
| 5,420 - 5,680 ft | Midway Growth Boundary | Section Line |
| 5,680 - 5,920 ft | Roads | |
| 5,920 - 6,180 ft | Primary | |
| 6,180 - 6,460 ft | Secondary | |
| 6,460 - 6,740 ft | | |



Map Produced by Kory Iman, GISP / Chief Cartographer
 Mountainland Association of Governments
 Map Production Date: May 2011
 Map Projection: State Plane Utah Central NAD83, Feet
 Data Source: Midway City & Wasatch County

